



Special News Flash

27 November 2015



THE NEWLY ELECTED COMMITTEE OF THE LADIES SECTION



Back: L de Beer, D Parker and D Wessels.
Front: G Botha (Treasurer), M Smith (Secretary),
M Kaltenbrunn (Captain) and I Swart (Vice Captain).



December season is upon us...!!!

We would like to remind our members that bookings for the December season is now in progress. All bookings between 15 December and 5 January must be paid in advance. Members can prefund their accounts and the rounds will be deducted by Lizette. Those with pre-paid rounds only need to provide funds for the days that they take part in competitions. Our overseas and out-of-town members can use the on-line booking form to reserve their spots. This form can be downloaded at www.mosselbaygolfclub.co.za. Completed forms must be faxed to 044 691 3819 or mailed to lizette@mosselbaygolfclub.co.za.

LEDE GASTE

Die lede gaste tarief vir die periode 15 Desember – 5 Januarie is vasgestel op R350-00 per speler. Let wel dat die lid saam met die gas moet speel.

ON THE COURSE

PLEASE NOTE that no more placing will be allowed on our fairways. The Course & Terrain sub-committee assessed the condition of the course and determined that preferred lies are not necessary.

LET ASSEMBLIE OP dat daar geen plasing op die skoonvelde meer toegelaat gaan word nie. Die besluit volg op 'n aanbeveling van die Baan & Terrein sub-komitee wat die algemene toestand van ons skoonvelde bestudeer het. Die reel sal ook 'n groot impak hê op die tyd wat spelers gaan neem in die komende vakansie seisoen.

THE RULES

With members being in the habit of placing it may sometimes happen that players forget about the no placing rule and pick up their ball. We have had a number of requests for the rule to be explained. According to Rule 18 (Ball at rest moved) the player incurs a one stroke penalty and the ball must be replaced (not dropped). The player does not incur a penalty should the ball be moved accidentally. The course superintendent will mark bad spots in the fairways with white paint in which case the ball can be lifted and dropped within one club length from the nearest point of relief.



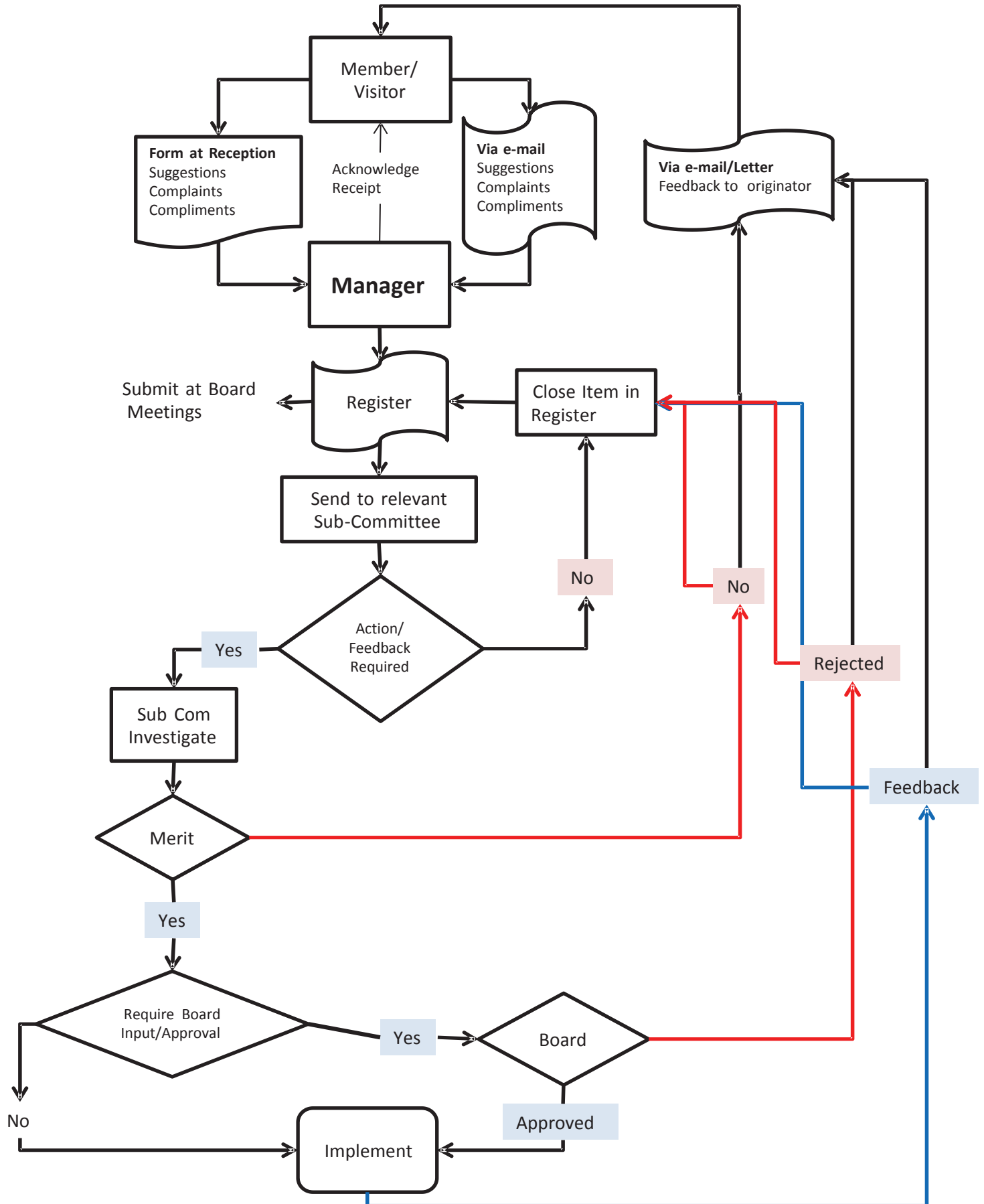
DRANK PRYSE

Die styging in kostes wat met die drankbedryf gepaardgaan het die Raad noodsaak om die Klub se verkooppryse dienooreenkomstig aan te pas. Om die lede hiermee te help en om die oorsakeling na die hoër pryse te help absorbeer gaan die lede se afslag by die kroeg verhoog word van 10% na 15% vir die periode 1 – 31 Desember 2015. Op 1 Januarie 2016 sal dit teruggeskakel word na 10%. Hierdie vergunning geld slegs vir die kroeg.

SUGGESTIONS / COMPLIMENTS / COMPLAINTS

Following recent incidents at the Club it was decided to publish the proper procedure to be followed if a member wants to convey any suggestions, compliments or complaints to the Manager and/or the Board. Many good verbal suggestions are being made, however we would like to follow-up on these in a more formal manner. It would be appreciated if these could be formally communicated as per the attached procedure so that it can be properly managed.

MANAGEMENT OF SUGGESTIONS, COMPLIMENTS, COMPLAINTS



GEEL BOWWE VIR BESOEKERS

Die Raad het besluit dat besoekers wat op ons baan kom speel in kompetisies slegs van die geel bowwe mag afslaan indien ons vooraf deur die speler se klub skriftelik in kennis gestel is. In so 'n geval sal die verpligte aanpassing van die voorgee ook deur die voorgee komitee toegepas word.

PRIZE-GIVINGS/ PRYSUITDELINGS

The Board made a decision to change the policy with regards to attendance prize-givings, more specifically in respect of Saturdays. With immediate effect all Competition days which are not sponsored will not have a prize-giving. Players must keep an eye on the notice board to see if they won a prize. For all sponsored days attendance will remain compulsory.

Die Raad het besluit dat bywoning by kompetisies wat nie geborg is nie voortaan nie verpligtend sal wees nie. Op hierdie spesifieke dae sal daar geen prysuitdeling wees nie, en spelers moet asb die kennisgewingbord dophou om te sien of hulle gewen het. Bywoning by geborgde dae is steeds verpligtend.



MOSSSELBAAI GHOLFklub



Results / Uitslae

GLOBAL GOLF			
18 NOVEMBER 2015			
PLAYERS IN FIELD 131 IND MEDAL			
GROSS A DIV 0 - 13			
1	BERTU NEL	76	7
GROSS B DIV 14-22			
1	JANNIE LOURENS	83	14
GROSS C DIV 23+			
1	HETTIE BRUWER	95	25
NETT OVERALL			
4	ARIAAN MAARSCHALK	68	8
5	ANDRE BRUWER	68	15
6	NEIL JACOBS	70	6
7	L D GRIESEL	70	6
8	BILLY CAPEL	70	26
NEAREST THE PIN			
4	KOOS SNYMAN		
8	ROGER PRICE		
12	DIETER VAN DEN BERG		
15	DUDLEY WOOLDRIDGE		

BB STABLEFORD 25 NOVEMBER 2015				
AANTAL SPELERS: 175		SCORE	COMB. H/C	NOMINEE
A DIVISION 0-24				
1	LOUW STRYDOM / MORNE HUGO	47	14	
B DIVISION 25+				
1	PAT GOOD / NICK WEIDEMAN	47	43	
3	BILLY CAPEL / MALAN BARNARD	47	55	
4	ARRIE VAN DER LINDE / DONNY SMITH	47	14	
5	J J JOUBERT / DEREK VAN HEERDEN (PIVOT)	47	19	
6	LOUIS VISSER / RACHEL MULDER	47	51	
7	FANIE V VUUREN / ANTON IZAAKSE (SNR)	47	27	
8	DANIE PRETORIUS / DANIEL PRETORIUS	46	30	
NEAREST THE PIN				
4	ARRIE VAN DER LINDE			
8	JAKKIE VAN NIEKERK			
12	ERTJIES MALHERBE			
15	DEREK VAN HEERDEN			
MOST GOLF				
	ROLAN MULLER / GARY BRANDT	34	24	

Enjoy your golf this week.

Louw & Team

